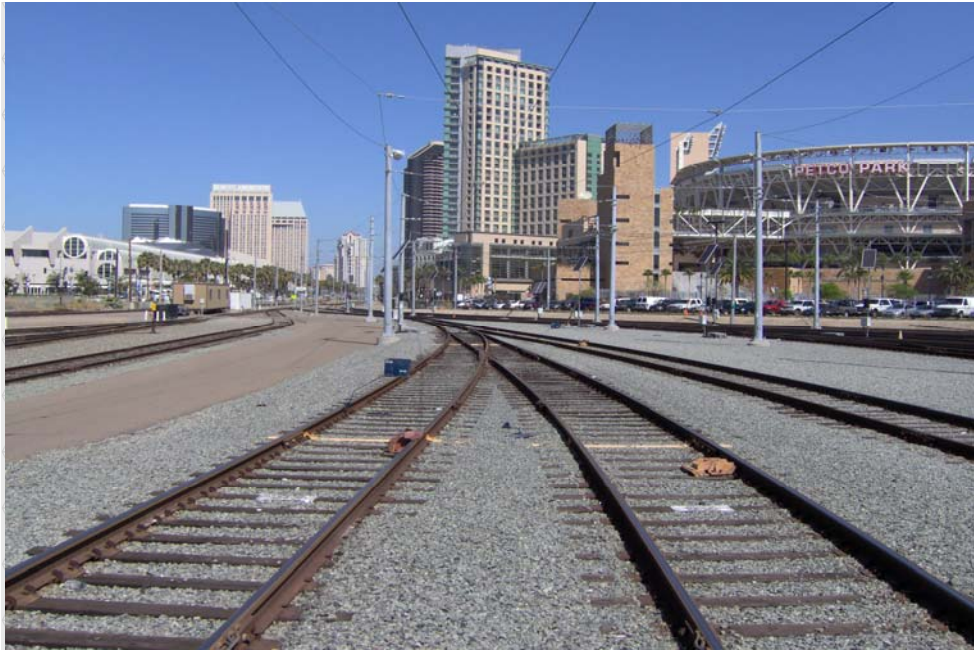


HARBOR DRIVE, AT-GRADE RAIL CROSSING SURVEY

SAN DIEGO, CALIFORNIA



Owner
Centre City Development Corporation
City of San Diego

Services
Surveying
HD Laser Survey

Completion Date
2008

Key Personnel
D. K. Nasland, PLS, PE;
Director of Surveys
John Winn, PLS;
Survey Project Manager

Project Summary

Nasland Engineering provided topographic survey of approximately 2,500 feet of rail line locations on the south side of Petco Park extending southeast into a rail yard. Services included switching gear elevations and center of existing rail grades at 25-foot intervals. Laser scanning methods were used to reduce access into railroad right-of-way.

The major challenges for this project were the extremely active rail corridor and the long lead time in arranging authorization to access the site in order to complete the survey on time.

One of the primary users of this section of the rail had an onerous access authorization procedure. The use of laser scanning technology allowed us to work from a safe location offsite to complete our survey on time.

